



**ANTIOCH SCHOOL DISTRICT 34**

*Inspiring personal excellence.*

## District NWEA Winter Update

Adam Sax – Administrator  
for Integration of Teaching,  
Learning and Technology



# D34 Strategic Plan



ANTIOCH SCHOOL DISTRICT #34  
ADMINISTRATIVE SERVICES CENTER

**ANTIOCH SCHOOL DISTRICT 34**  
*Inspiring personal excellence.*

## Strategic Plan 2015-2020

### MISSION

To inspire a passion for learning that empowers all students to achieve *personal excellence*

### VISION

Students will achieve *personal excellence* when everyone demonstrates:

- Commitment to continuous improvement
- High expectations for academic, social, emotional and behavioral growth
- Effective collaboration, communication, critical thinking and creativity
- Ownership, responsibility and accountability for growth and development

### GOALS

- Continuous Student Growth & Achievement
- Supportive Learning Environment
- High Quality Workforce
- Family and Community Partnerships
- Efficient and Effective Use of Resources

### CORE VALUES/COMMITMENTS

We believe students learn in **different ways and at different rates.**

We believe it is our responsibility to guide students towards **self-sufficiency, ownership, responsibility and accountability** for their own learning.

We believe in providing a **safe and secure environment** in order to foster a community of collaborative learners.

We value **continuous improvement through teamwork, collaboration and shared leadership** at all levels.

We believe a **high quality staff** is essential to a high-achieving school system.

We believe that **corroborative partnerships and effective communication** among the community, home and school accelerates student success.

We believe the District must be a **good steward** of community resources.

Antioch School District 34	Antioch Elementary School	Hillcrest Elementary School	Oakland Elementary School	W.C. Petty Elementary School	Antioch Upper Grade School
964 Spafford Street Antioch, IL 60002 847-838-8401	817 N. Main Street Antioch, IL 60002 847-838-8901	433 E. Depot Street Antioch, IL 60002 847-838-8001	818 E. Grass Lake Road Lake Villa, IL 60046 847-838-8601	850 Highview Drive Antioch, IL 60002 847-838-8101	800 Highview Drive Antioch, IL 60002 847-838-8301

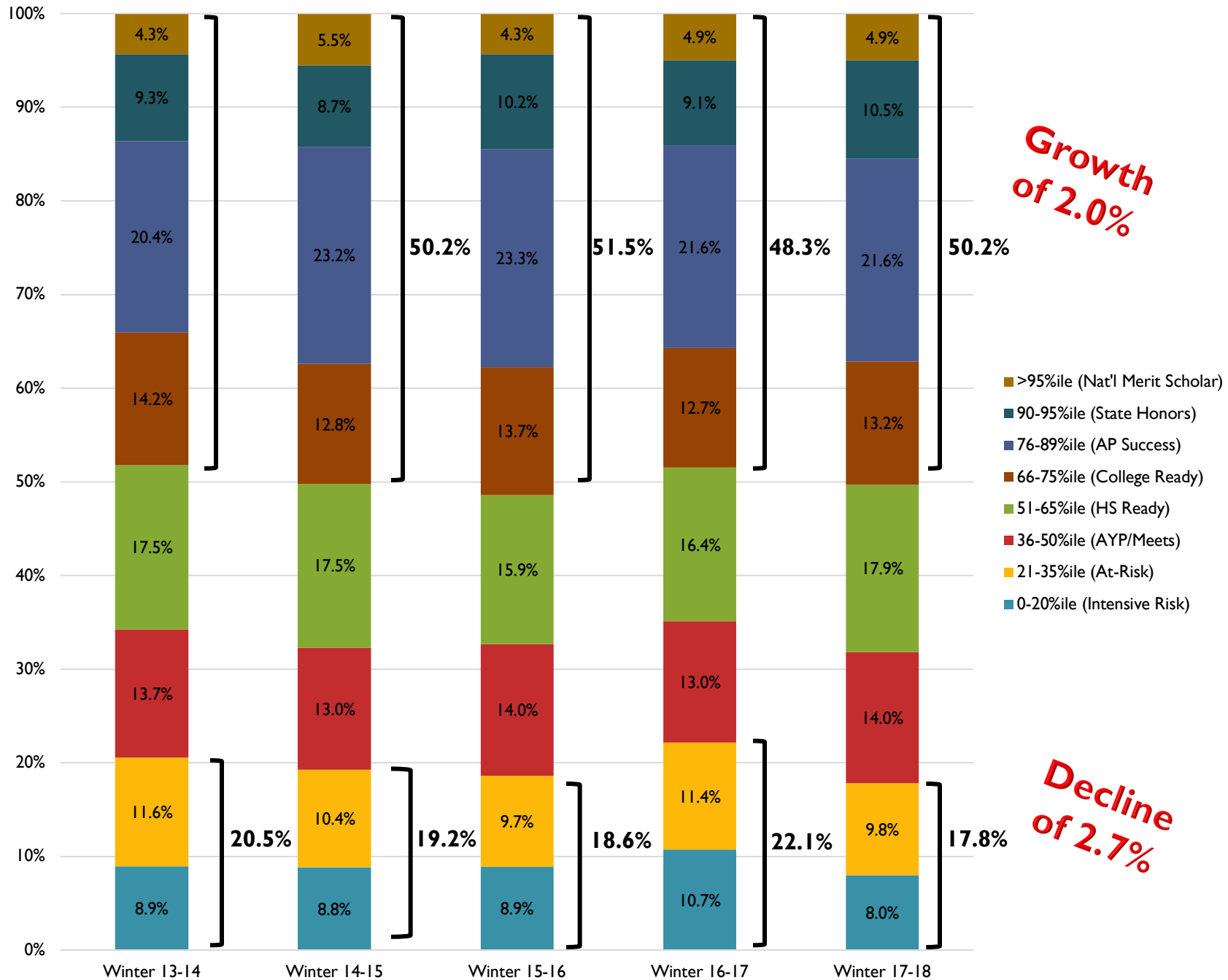
[www.antioch34.com](http://www.antioch34.com)

Continuous  
Student  
Growth &  
Achievement



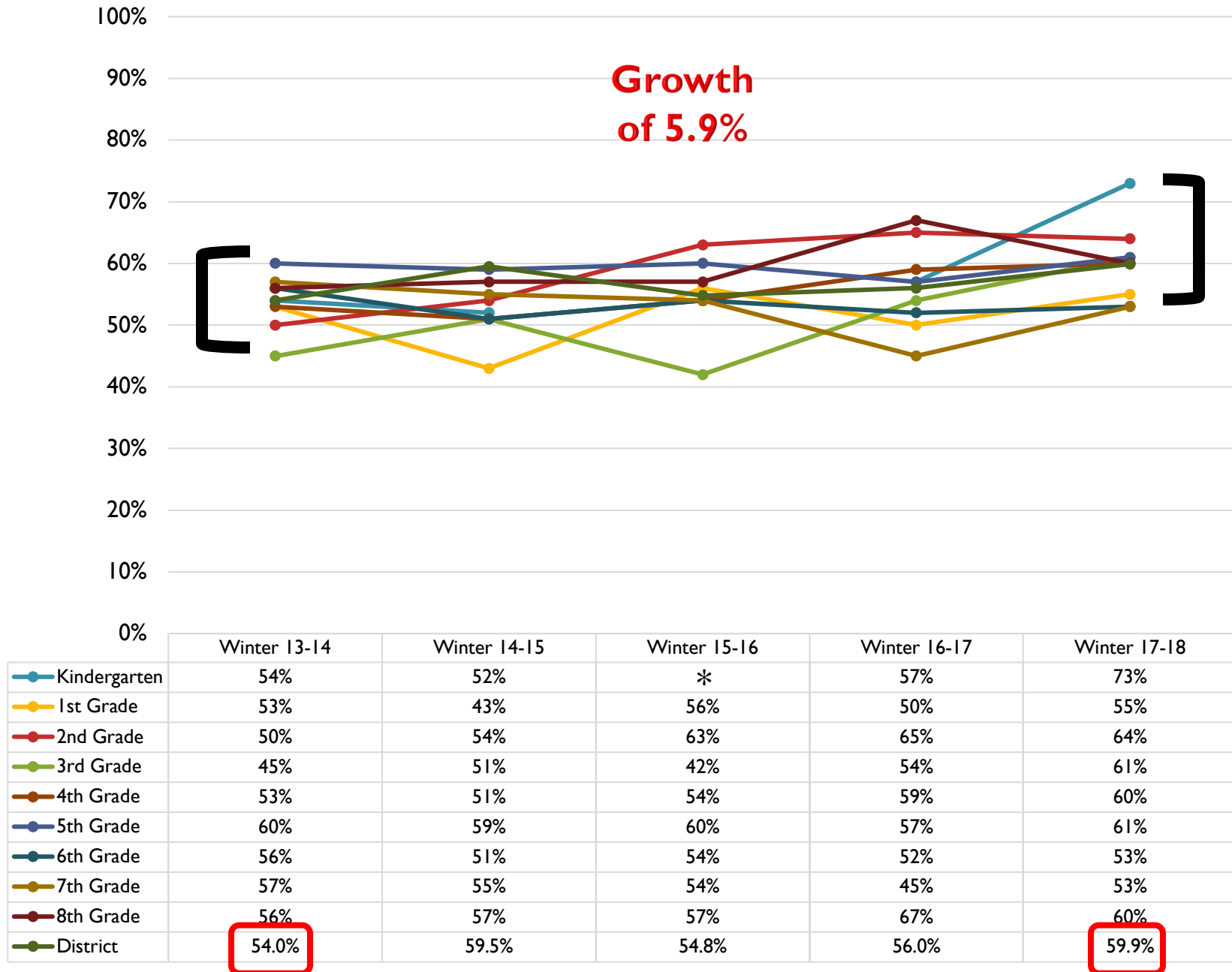
# READING

# NWEA MAP Winter Reading %ile Distribution

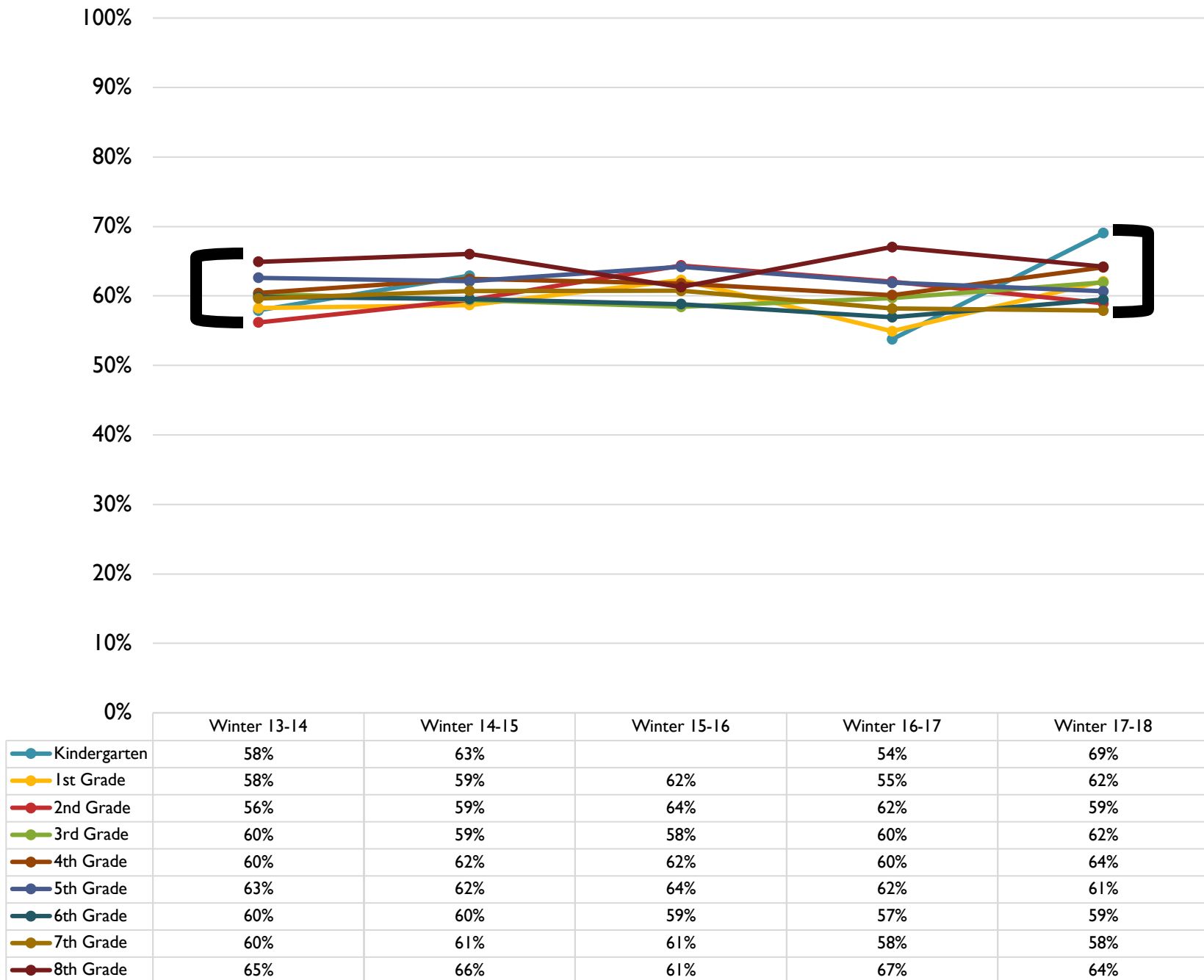




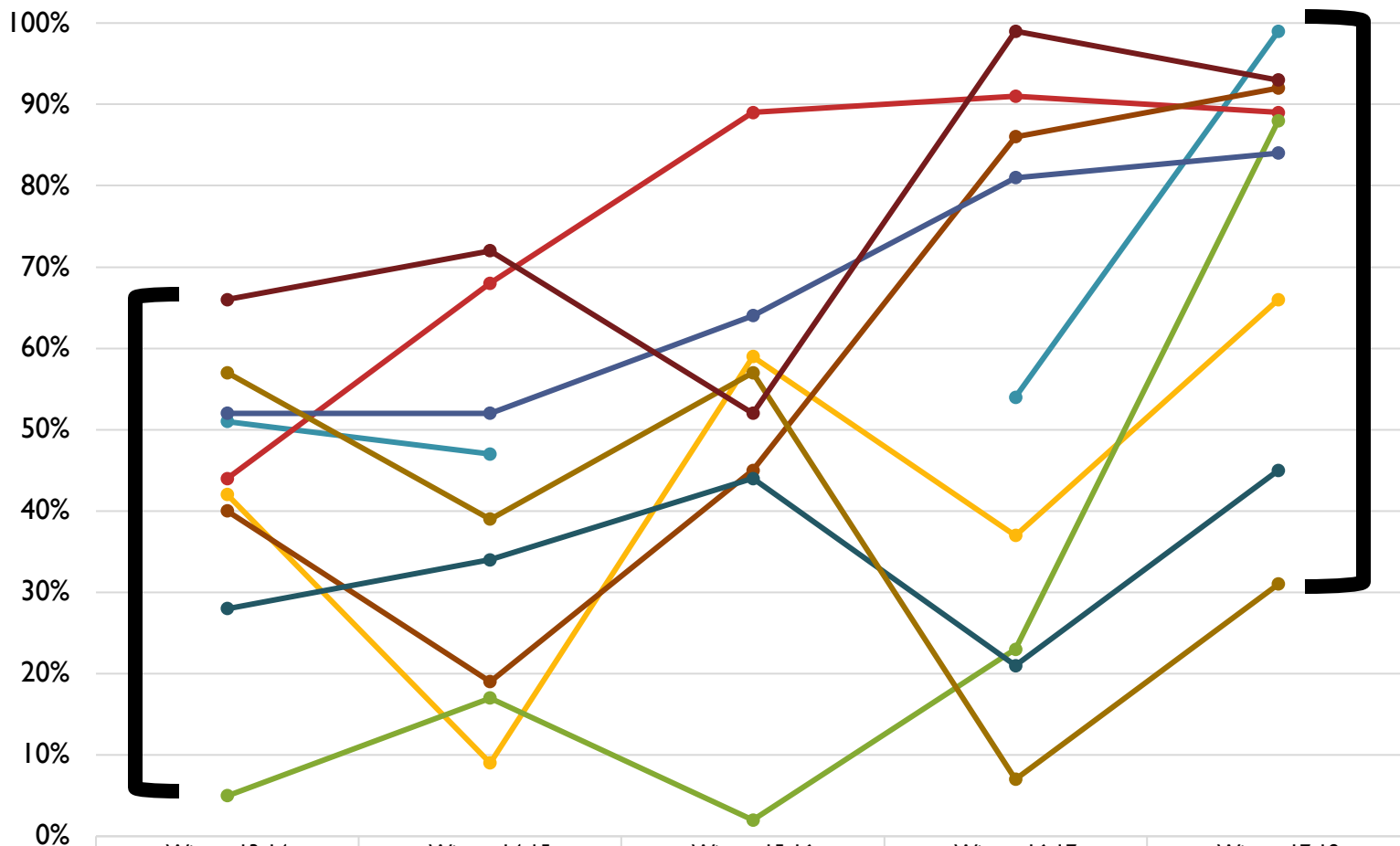
# NWEA MAP Winter Reading Percent of Students Meeting Growth Targets



# NWEA MAP Reading Average RIT Percentile



# NWEA MAP Winter Reading Conditional Growth Index Percentile by Grade Level

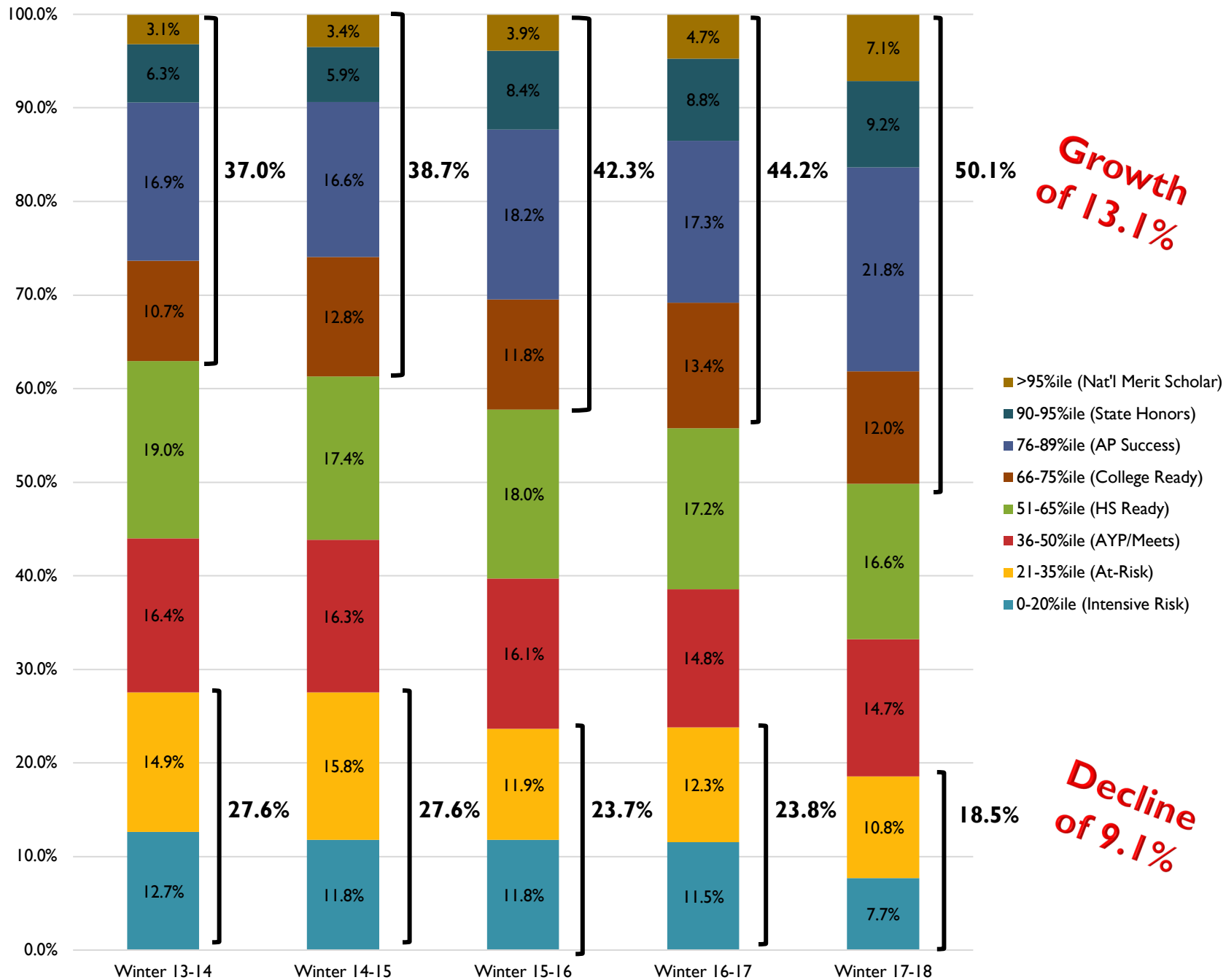


	Winter 13-14	Winter 14-15	Winter 15-16	Winter 16-17	Winter 17-18
Kindergarten	51%	47%		54%	99%
1st Grade	42%	9%	59%	37%	66%
2nd Grade	44%	68%	89%	91%	89%
3rd Grade	5%	17%	2%	23%	88%
4th Grade	40%	19%	45%	86%	92%
5th Grade	52%	52%	64%	81%	84%
6th Grade	28%	34%	44%	21%	45%
7th Grade	57%	39%	57%	7%	31%
8th Grade	66%	72%	52%	99%	93%

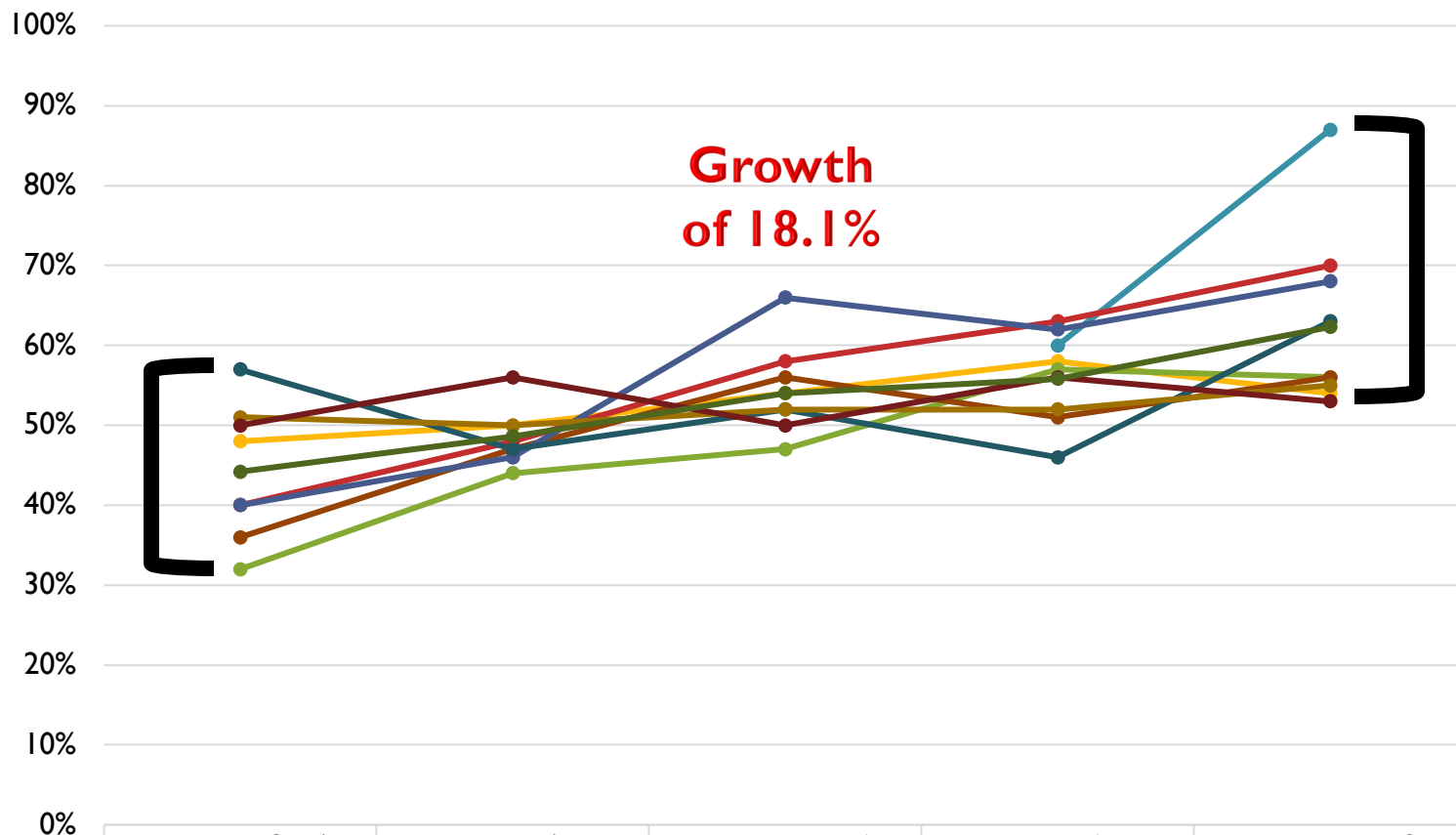


**MATH**

# NWEA MAP Winter Mathematics %ile Distribution

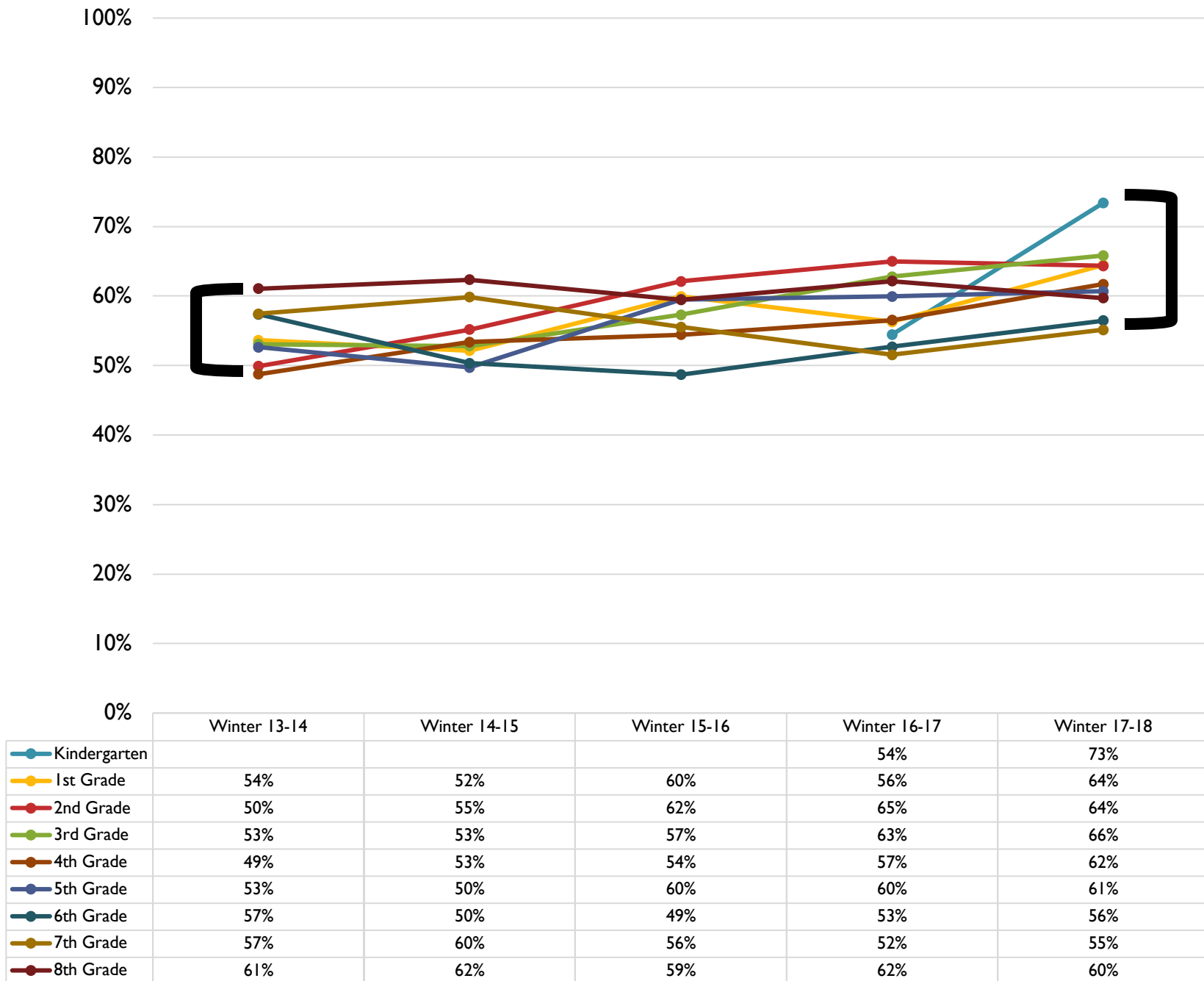


# NWEA MAP Winter Mathematics Percent of Students Meeting Growth Targets



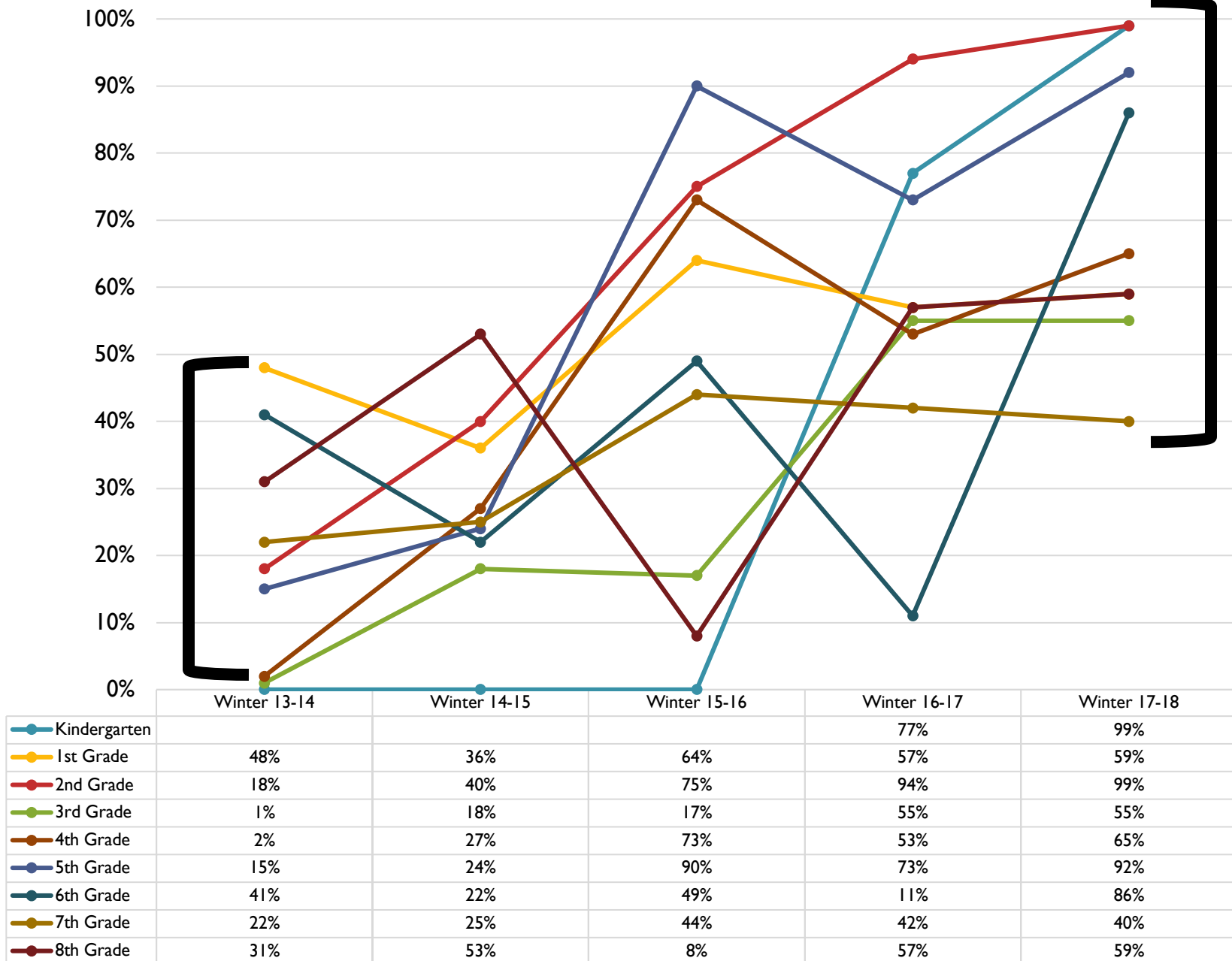
	Winter 13-14	Winter 14-15	Winter 15-16	Winter 16-17	Winter 17-18
Kindergarten				60%	87%
1st Grade	48%	50%	54%	58%	54%
2nd Grade	40%	48%	58%	63%	70%
3rd Grade	32%	44%	47%	57%	56%
4th Grade	36%	47%	56%	51%	56%
5th Grade	40%	46%	66%	62%	68%
6th Grade	57%	47%	52%	46%	63%
7th Grade	51%	50%	52%	52%	55%
8th Grade	50%	56%	50%	56%	53%
District	44.2%	48.6%	54.0%	55.8%	62.3%

# NWEA MAP Mathematics Average RIT Percentile





# NWEA MAP Winter Mathematics Conditional Growth Index Percentile by Grade Level



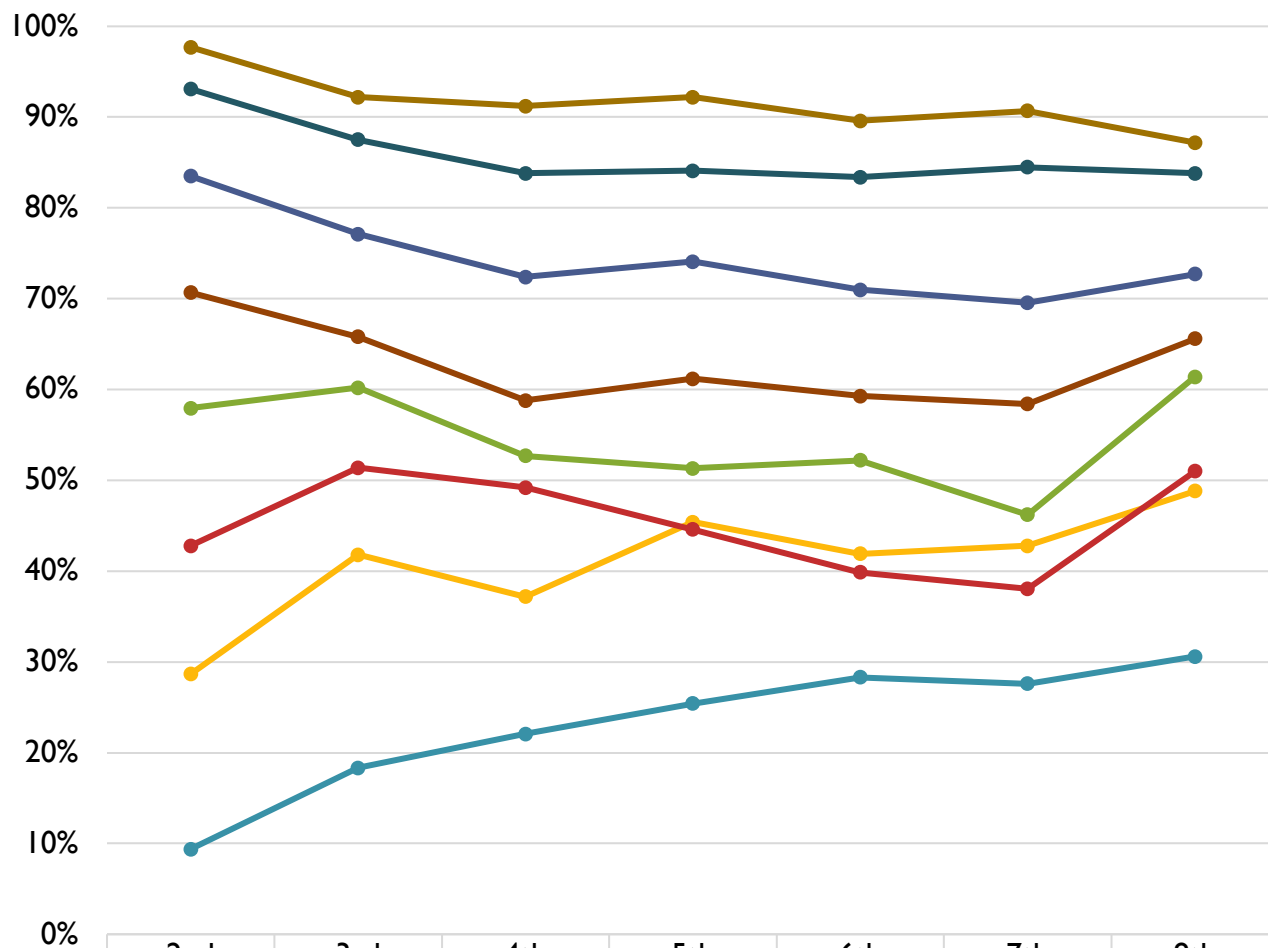
# Cohort Data Explained

- When looking at Cohort Data, all students in Kindergarten (or 1<sup>st</sup> or 2<sup>nd</sup>) in the given cohort are selected, and then followed throughout their years in District 34.
- Students who have moved in are not counted in this specific data set
- Students who move out are still counted when they were students in D34.



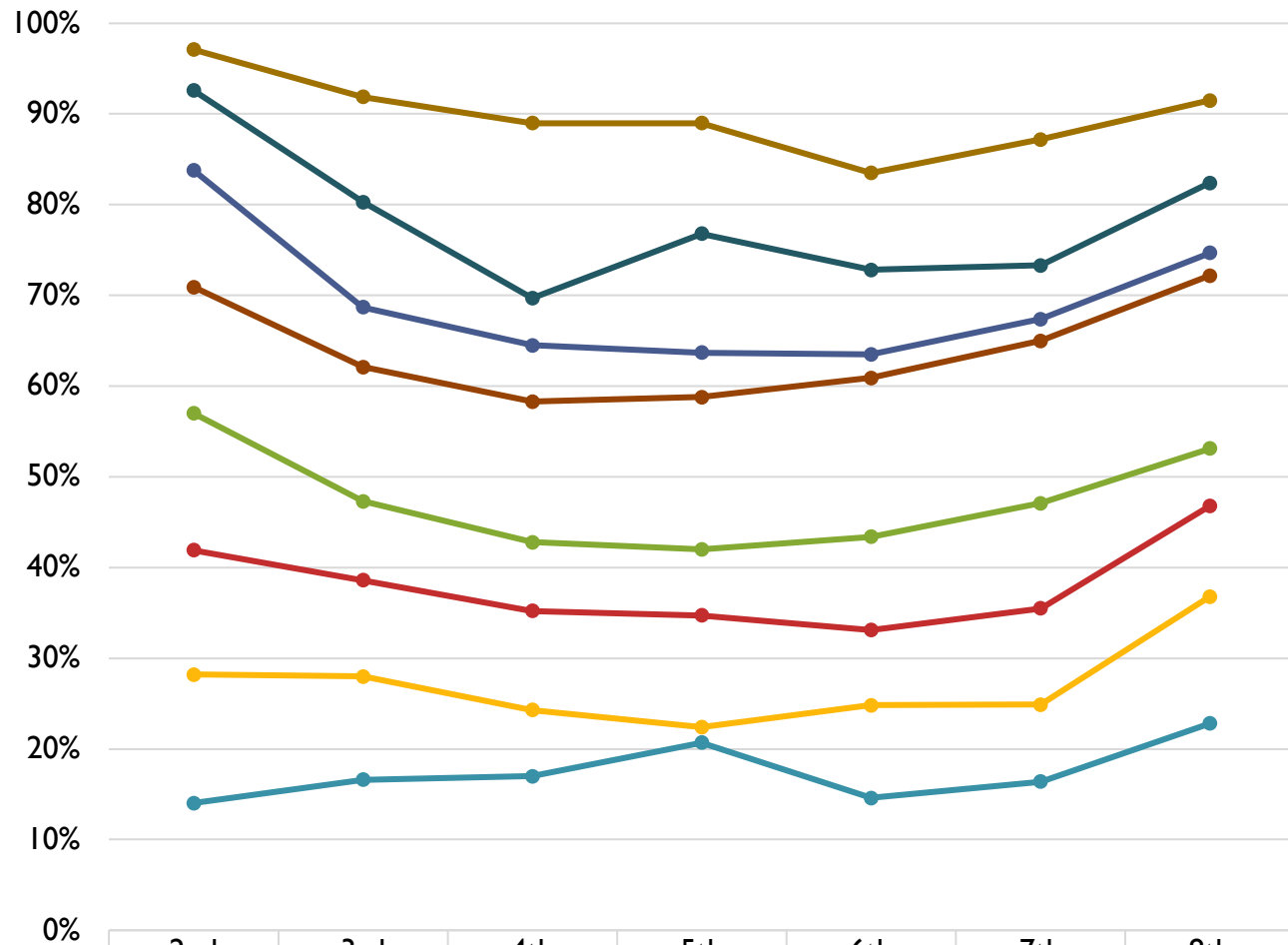
**Class of 2018**

# NWEA MAP Winter Reading Percentile Bands Over Time - Class of 2018



	2nd	3rd	4th	5th	6th	7th	8th
0-20%ile (Intensive Risk)	9.4%	18.3%	22.1%	25.4%	28.3%	27.6%	30.6%
21-35%ile (At-Risk)	28.7%	41.8%	37.2%	45.4%	41.9%	42.8%	48.8%
36-50%ile (AYP/Meets)	42.8%	51.4%	49.2%	44.6%	39.9%	38.1%	51.0%
51-65%ile (HS Ready)	58.0%	60.2%	52.7%	51.3%	52.2%	46.2%	61.4%
66-75%ile (College Ready)	70.7%	65.8%	58.8%	61.2%	59.3%	58.4%	65.6%
76-89%ile (AP Success)	83.5%	77.1%	72.4%	74.1%	71.0%	69.6%	72.7%
90-95%ile (State Honors)	93.1%	87.5%	83.8%	84.1%	83.4%	84.5%	83.8%
>95%ile (Nat'l Merit Scholar)	97.7%	92.2%	91.2%	92.2%	89.6%	90.7%	87.2%

# NWEA MAP Winter Mathematics Percentile Bands Over Time - Class of 2018



	2nd	3rd	4th	5th	6th	7th	8th
0-20%ile (Intensive Risk)	14.0%	16.6%	17.0%	20.7%	14.6%	16.4%	22.8%
21-35%ile (At-Risk)	28.2%	28.0%	24.3%	22.4%	24.8%	24.9%	36.8%
36-50%ile (AYP/Meets)	41.9%	38.6%	35.2%	34.7%	33.1%	35.5%	46.8%
51-65%ile (HS Ready)	57.0%	47.3%	42.8%	42.0%	43.4%	47.1%	53.1%
66-75%ile (College Ready)	70.9%	62.1%	58.3%	58.8%	60.9%	65.0%	72.2%
76-89%ile (AP Success)	83.8%	68.7%	64.5%	63.7%	63.5%	67.4%	74.7%
90-95%ile (State Honors)	92.6%	80.3%	69.7%	76.8%	72.8%	73.3%	82.4%
>95%ile (Nat'l Merit Scholar)	97.1%	91.9%	89.0%	89.0%	83.5%	87.2%	91.5%

# Summary

- District 34 students' distribution of percentiles on the Winter NWEA Assessment has increased in both Reading (2.0%) and Mathematics (13.1%) over the past 5 years, but more significantly in Mathematics
- Percent of Students meeting Winter NWEA Growth Targets have increased in both Reading (5.9%) and Mathematics (18.1%) over the past 5 years, but more significantly in Mathematics
- Conditional Growth Index Percentiles have increased in both Reading and Mathematics over the past 5 years, but more significantly in Mathematics

# Continuous Improvement

- Further analyze our two higher subgroups (National Merit Scholar & State Honors)
- Continue the implementation of the Teaching and Learning Goals 2 & 3
- Continue to work with our staff members to utilize the data to make educational decisions for our students

**Goal 2:** By Spring of 2018, the ELA and Math Committees will be reconvened and will have met at least monthly to study standards, curriculum, instruction, and assessment using the Curriculum, Instruction, and Assessment Audit as a guide.

**Goal 3:** By Spring 2018, a District Multi-Tiered System of Supports (MTSS) guidebook will be completed, communicated, and incorporated into practice in alignment with the Curriculum, Instruction, and Assessment Audit results.





**ANTIOCH SCHOOL DISTRICT 34**

*Inspiring personal excellence.*

**Questions & Comments?**

**Thank You!**